

# ENTER THE WOODS AND THE WILD

You will find me at the entrance of the Sculpture Gallery. I am the vehicle (vahana) of Shiva sitting right in front of him. Read the information card and write down when I was made and where I was found.

---

---

---



Take a left and walk further inside the Sculpture Gallery. You will find two sculptures of roaring lions. These ferocious creatures are called leogryphs and have physical features like that of griffins and a mix of other animals. Create a creature of your own! What kind of feathers, claws and other features will you give it?



Once you walk out of the Sculpture Gallery turn into the gallery on your right. Look out for the small sculpture of Buddha seated under a Peepal Tree, the Bodhi tree, giving his first sermon. The tree along with the lotus, chakra and elephant are important symbols of Buddha.

Can you spot more of these symbols across the gallery?



Walk upstairs to the Indian Miniature Painting Gallery on the first floor. Look for the miniature painting of a falcon on a perch. Did you know that the Peregrine Falcon was dear to the Mughal Emperor Jehangir who appreciated the bird for its sharpness? This was painted by Ustad Mansur, an artist in Jehangir's court. Tell us the features of your favourite bird.



---

---

---

---



Explorer's Name



From the Indian Miniature Painting Gallery, walk straight across towards the Indian Decorative Arts Gallery. Walk into the gallery and you will find a gunpowder flask in the shape of a leaping antelope made of ivory, known as Barud-daan. Notice the lips, wide open eyes and antlers of the antelope leaping mid-air, possibly running away from predators or hunters.

Walk around the gallery and tick the objects you see

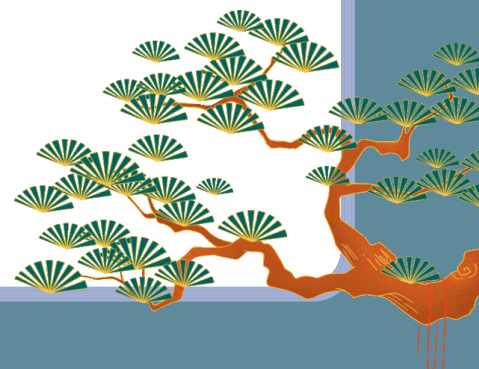
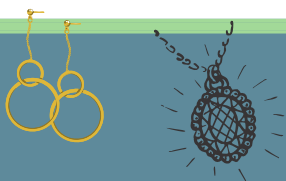
- ☐ A jade bowl
- ☐ A sword
- ☐ A bronze sculpture of a god
- ☐ An ivory jewellery box
- ☐ A copper bowl
- ☐ A Howdah (a carrier on an elephant's back)



Let's head to the Money Gallery. It is on the first floor too. You will need to walk through the Prints Gallery, past the lift into the next wing. Notice the different kinds of coins. Spot the different animals on the coins and draw them out.



We're almost there! On to the Jewellery Gallery next door. Keep an eye out for the different kinds of jewellery inspired by nature, particularly a white necklace and a pair of earrings. It is made from fish scales and stones. Design your own jewellery inspired by nature.



THE  
MUSEUM  
MUMBAI  
CSMVS

छत्रपती शिवाजी महाराज वस्तुसंग्रहालय  
CSMVS

100  
— YEARS —

BANK OF AMERICA